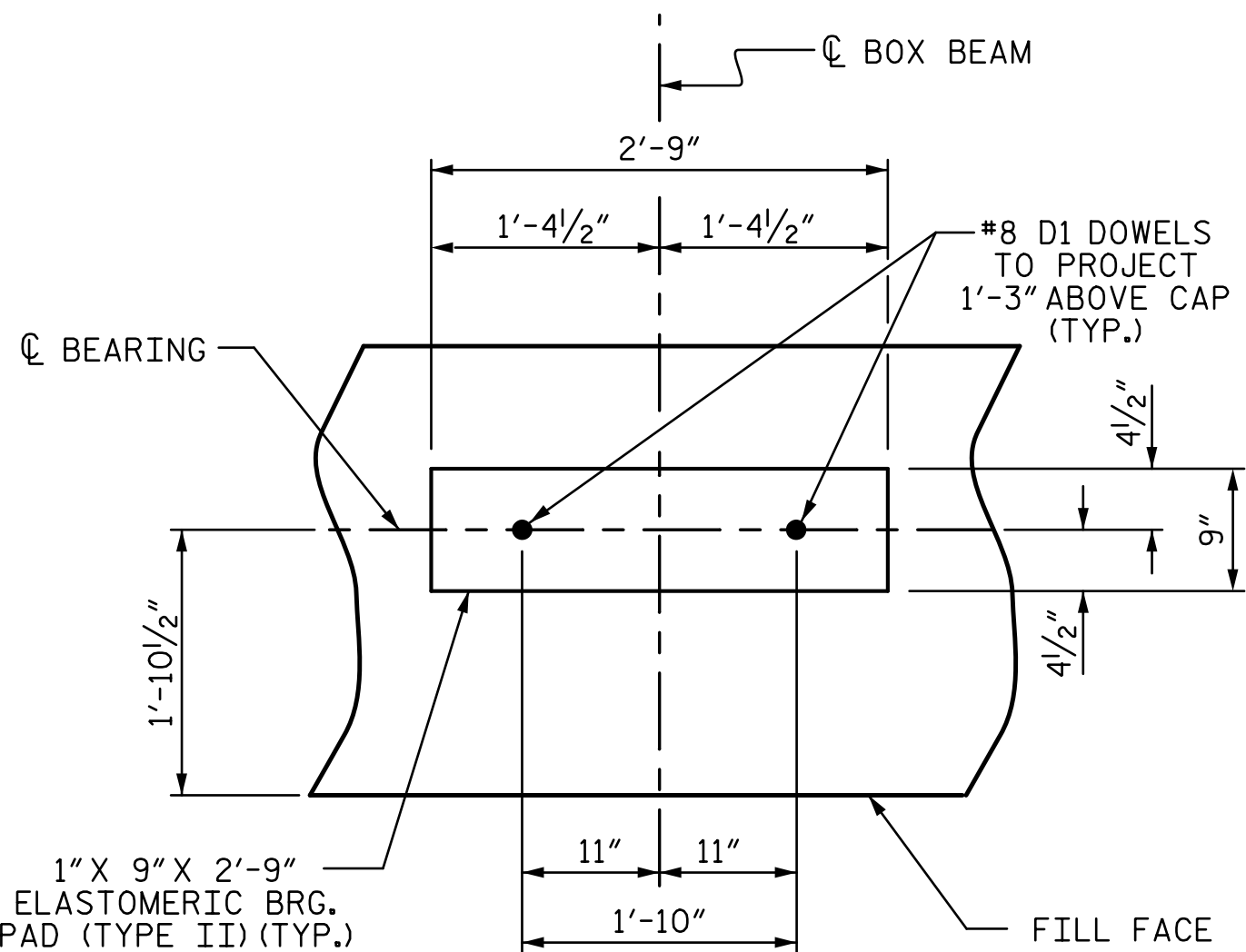


BAGGED STONE AND PIPE SHALL BE PLACED IMMEDIATELY AFTER COMPLETION OF END BENT EXCAVATION. PIPE MAY BE EITHER CONCRETE, CORRUGATED STEEL, CORRUGATED ALUMINUM ALLOY, OR CORRUGATED PLASTIC. PERFORATED PIPE WILL NOT BE ALLOWED.

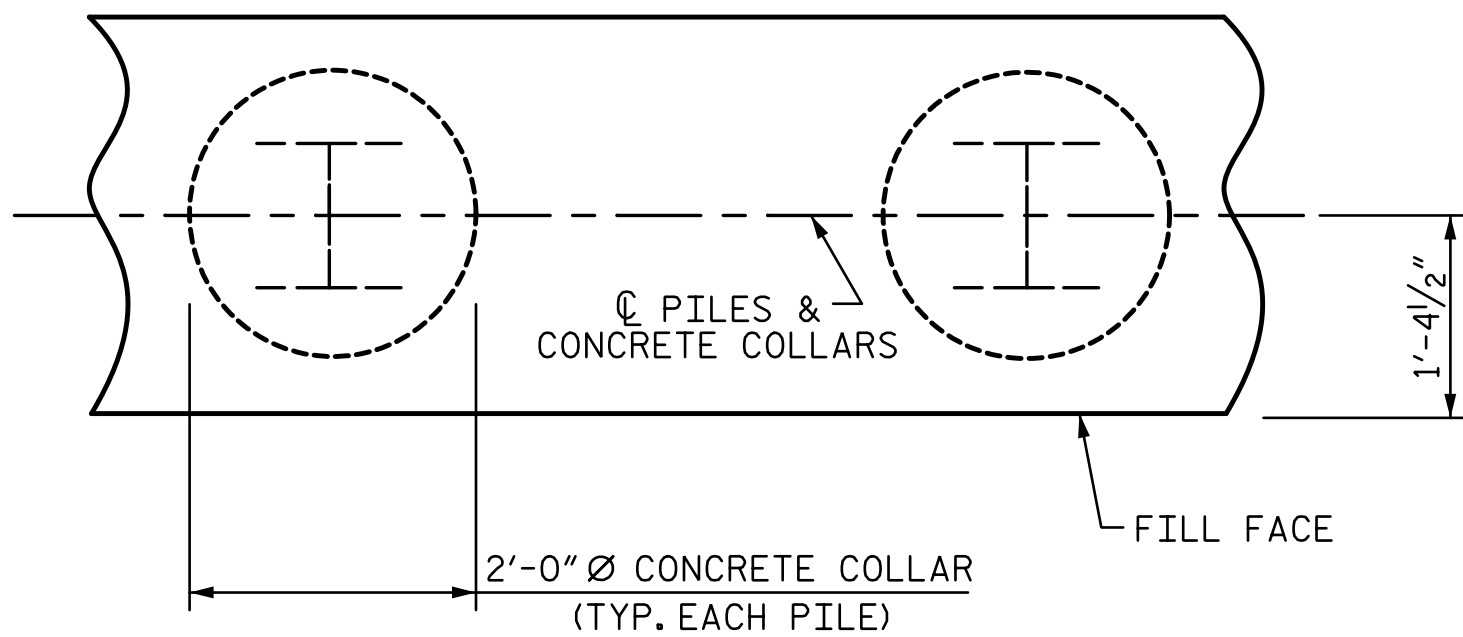
BAGGED STONE SHALL REMAIN IN PLACE UNTIL THE ENGINEER DIRECTS THAT IT BE REMOVED. THE CONTRACTOR SHALL REMOVE AND DISPOSE OF SILT ACCUMULATIONS AT BAGGED STONE WHEN SO DIRECTED BY THE ENGINEER. BAGS SHALL BE REMOVED AND REPLACED WHENEVER THE ENGINEER DETERMINES THAT THEY HAVE DETERIORATED AND LOST THEIR EFFECTIVENESS.

NO SEPARATE PAYMENT WILL BE MADE FOR THIS WORK AND THE ENTIRE COST OF THIS WORK SHALL BE INCLUDED IN THE UNIT CONTRACT PRICE BID FOR THE SEVERAL PAY ITEMS.

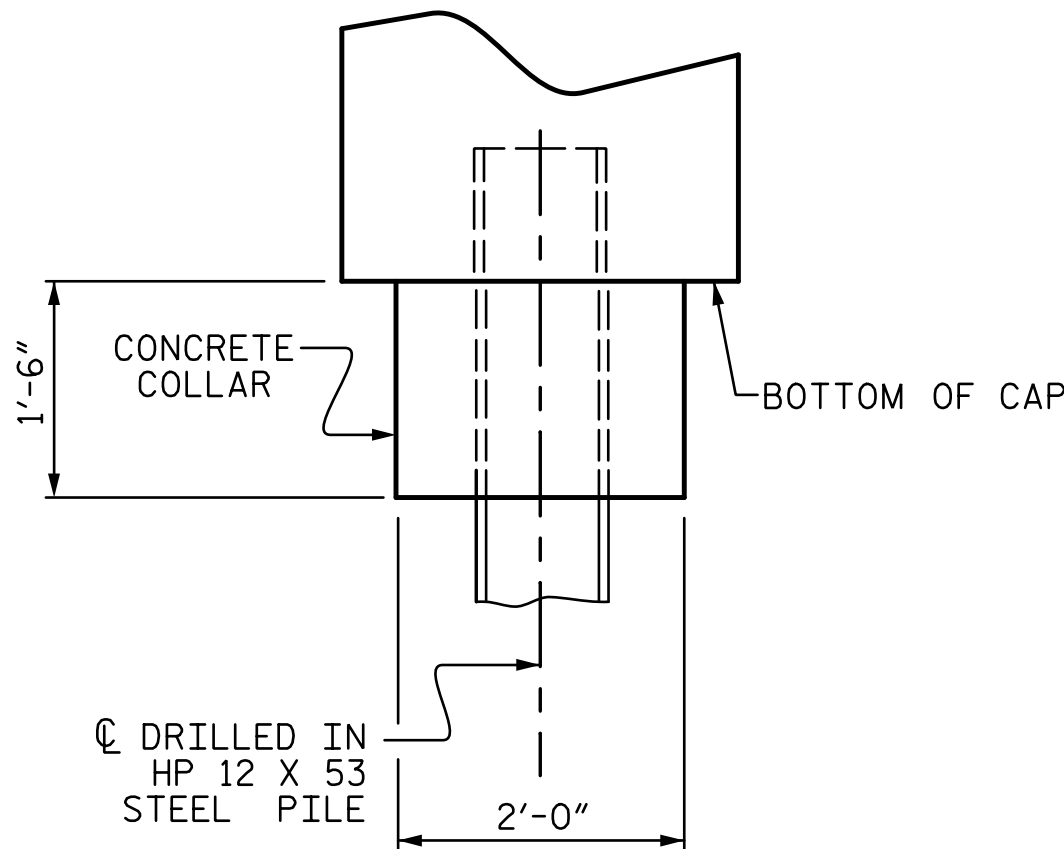
TEMPORARY DRAINAGE AT END BENT



DETAIL "A"

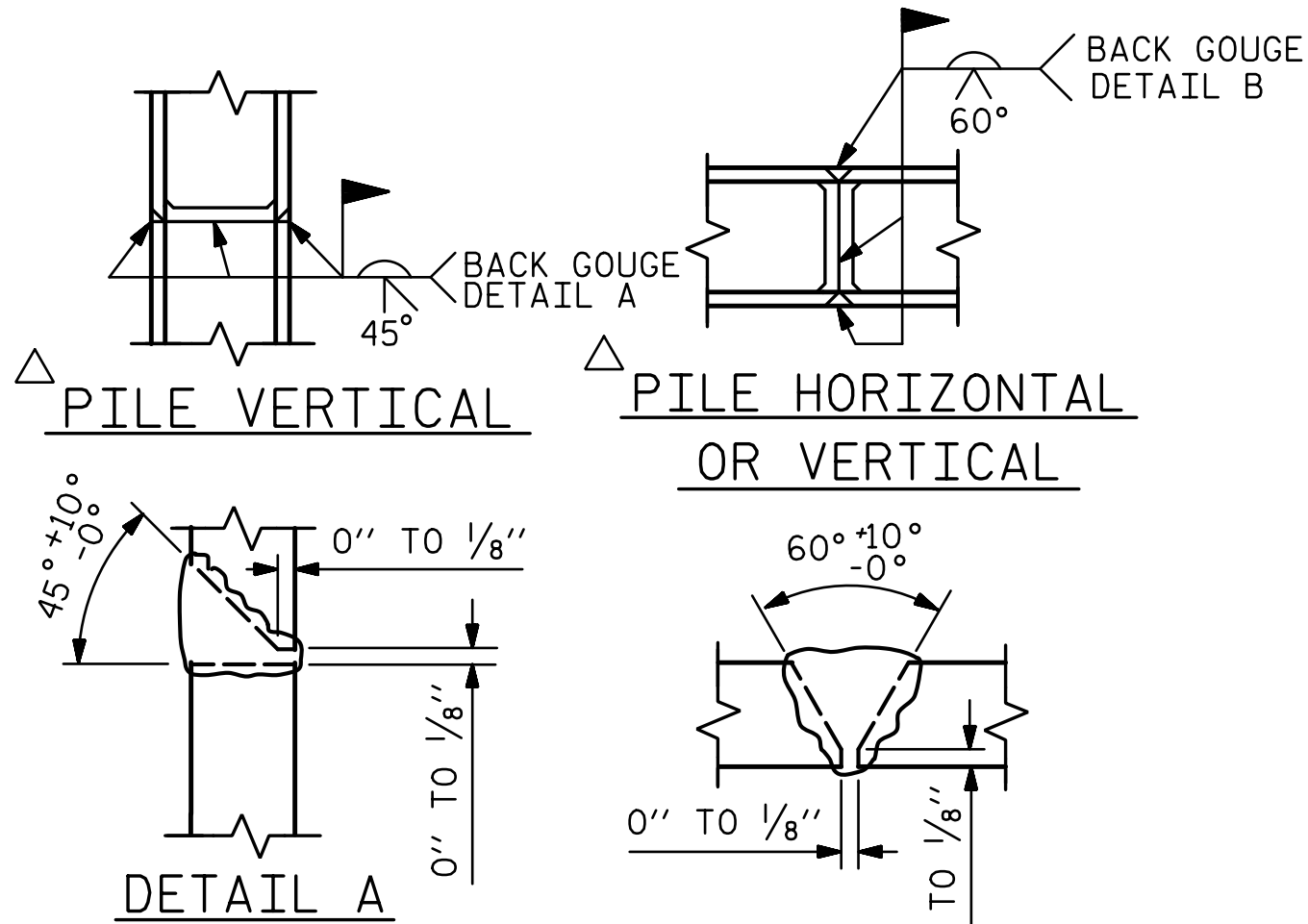


PLAN



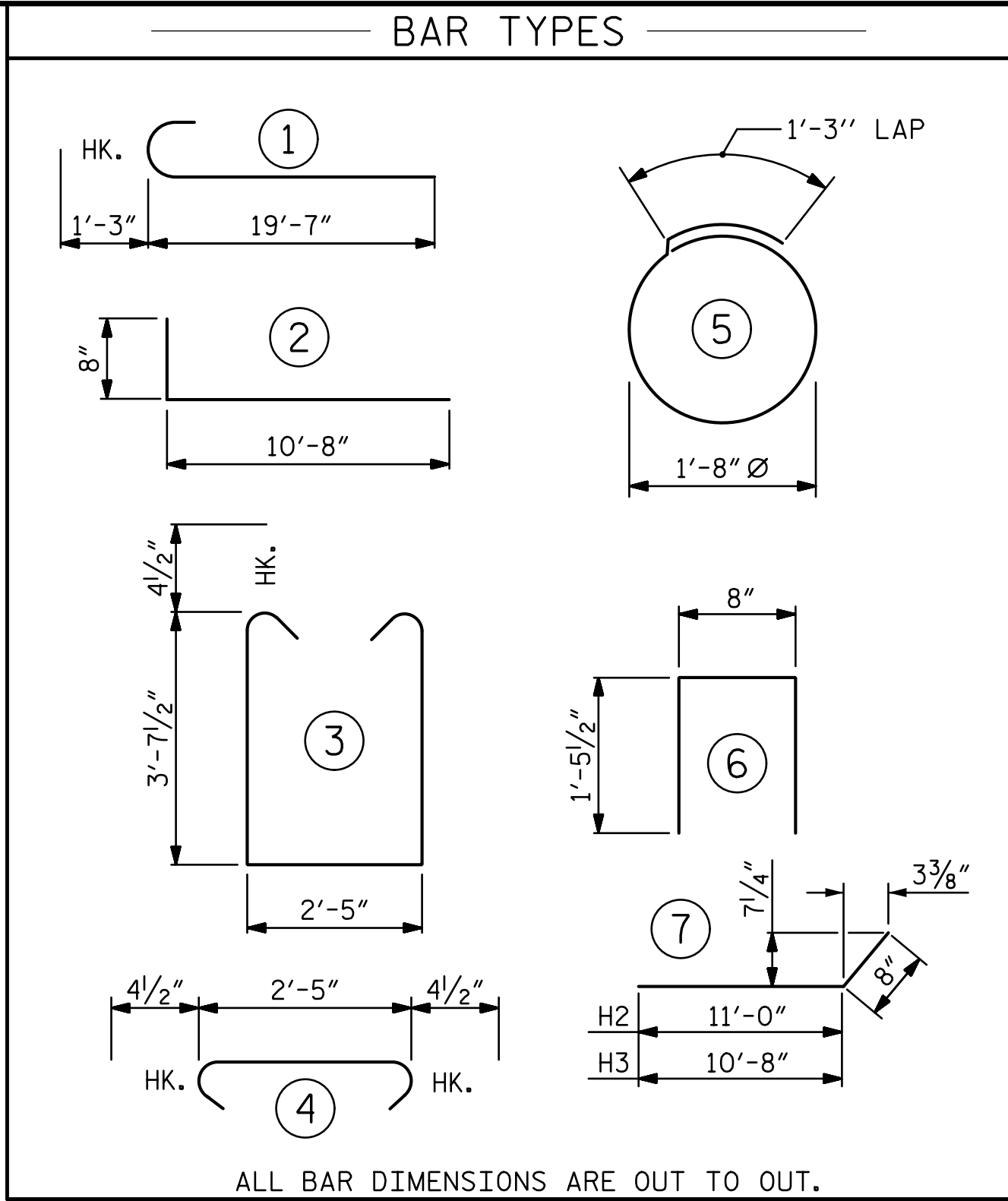
ELEVATION

CORROSION PROTECTION FOR STEEL PILES DETAIL



POSITION OF PILE DURING WELDING.

PILE SPLICE DETAILS



ALL BAR DIMENSIONS ARE OUT TO OUT.

BILL OF MATERIAL

END BENT 1

BAR	NO.	SIZE	TYPE	LENGTH	WEIGHT
B1	16	#9		20'-10"	1133
B2	28	#4	STR	18'-0"	337
B3	9	#4	STR	2'-5"	15
D1	18	#8	STR	2'-3"	108
H1	24	#5	2	11'-4"	284
H2	12	#5	7	11'-8"	146
H3	12	#5	7	11'-4"	142
K1	6	#4	STR	2'-11"	12
K2	12	#4	STR	18'-0"	144
K3	6	#4	STR	3'-9"	15
S1	42	#4	3	10'-5"	292
S2	42	#4	4	3'-2"	89
S3	20	#4	5	6'-6"	87
U1	27	#4	6	3'-7"	65
V1	60	#4	STR	7'-2"	287
V2	54	#4	STR	5'-3"	189

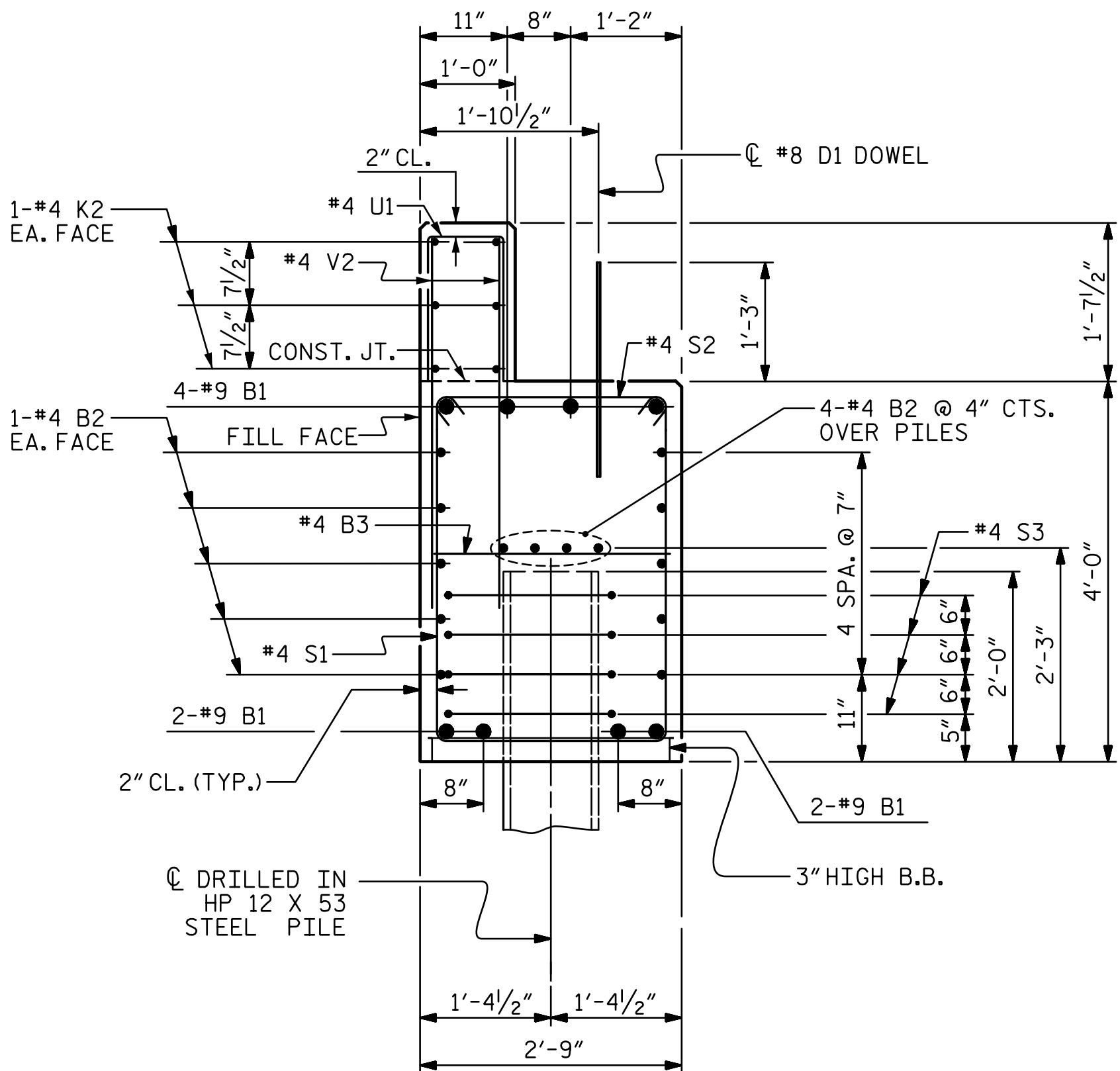
REINFORCING STEEL (FOR ONE END BENT) 3,345 LBS.

CLASS A CONCRETE BREAKDOWN (FOR ONE END BENT)

POUR #1 CAP, LOWER PART OF WINGS & COLLARS 17.7 C.Y.

POUR #2 BACKWALL & UPPER PART OF WINGS 5.1 C.Y.

TOTAL CLASS A CONCRETE 22.8 C.Y.



SECTION A-A

(CONCRETE COLLAR NOT SHOWN FOR CLARITY. SEE "CORROSION PROTECTION FOR STEEL PILES DETAIL.")

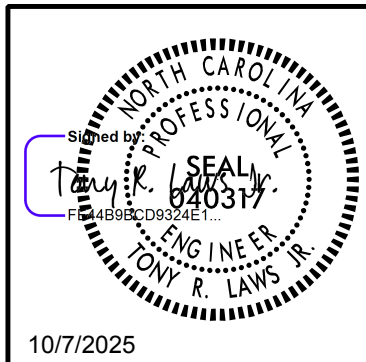
DOCUMENT NOT CONSIDERED FINAL UNLESS ALL SIGNATURES COMPLETED

PROJECT NO. DF18314.2075090

POLK COUNTY

STATION: 12+15.00 -L-

SHEET 3 OF 3



10/7/2025

RS&H

RS&H Architects-Engineers-Planners, Inc.  
8521 Six Forks Road, Suite 400  
Raleigh, NC 27615  
919-928-4100 FAX 919-846-9080  
www.rsandh.com  
North Carolina License Nos. 50073-F-4983-C-28

STATE OF NORTH CAROLINA  
DEPARTMENT OF TRANSPORTATION  
RALEIGH  
SUBSTRUCTURE

END BENT 1  
DETAILS

REVISIONS

NO.	BY:	DATE:	NO.	BY:	DATE:	SHEET NO.
1			3			S-17
2			4			TOTAL SHEETS 24

DRAWN BY : J. SCACCA DATE : 05/2025  
CHECKED BY : M. ACOSTA DATE : 07/2025  
DESIGN ENGINEER OF RECORD: T. R. LAWS DATE : 10/2025